

SHELTER

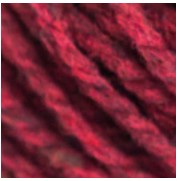
Color Stories



HOMEMADE JAM: A syrup of mixed ripe berries. *Homemade Jam* is a cool red tempered with blues, purple, black and brown. This shade is kin to our purples as well as our reds. It also plays well with our brown and grey neutrals, all our blues, and the cool greens of *Birdbook* and *Button Jar*, making it an excellent choice for inclusion in complex colorwork motifs.



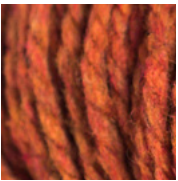
CAMPER: Red dawn streaked with wisps of cloud. *Camper* is a soft red, heavily frosted with white and revealing hints of rust, purple, and grey. This shifting hue may read as pink, salmon, or raspberry depending on the light and the colors nearby. It forms a natural gradient with *Homemade Jam* and *Plume*, but also works well with our neutrals.



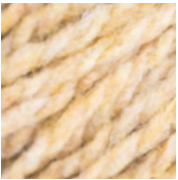
LONG JOHNS: Woodsman's flannel shirts. *Long Johns* is a shadowy crimson tinged with brown as well as black. Use it for dramatic garments, irresistible accessories, or elevated basics that will always lift your mood. *Long Johns* is one of those reds that looks good on people of every complexion and pairs beautifully with colors across the spectrum.



WOOL SOCKS: Peak autumn foliage. *Wool Socks* is a red brown warmed by rust, camel, orange, and yellow, the roasted version of *Embers*. Use it in a fall-inspired gradient with *Hayloft*, *Embers* and *Long Johns*, or make a smooth transition to our greens via *Embers* and *Fauna*. *Wool Socks* is also friendly with *Plume*, if you're looking for a richly saturated color pairing.



EMBERS: Fox fur gilded by late sunlight. *Embers* has a ground of rust burnished with red, brown, orange, and yellow. Reach for this hue if you want to knit the essence of autumn into a sweater. In colorwork it naturally forms a gradient with its redder cousin, *Wool Socks*, and *Long Johns*. Use *Fauna* to relate *Embers* to our greens, particularly *Birdbook*. *Embers* also contrasts beautifully with *Almanac* or *Plume* for a more playful effect.



BALE: Summer hay meadows. *Bale* is a gentle, pale, straw gold touched with brown and rust. This soothing hue is friendly with our range of greens and is a natural partner for *Hayloft*. *Bale* makes either beautiful garments or sophisticated home accents—try knitting cushion covers or a throw blanket to drape over a chocolate or charcoal sofa.



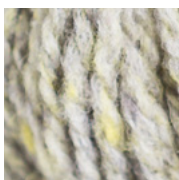
SAP: Green-gold tree frogs in full spring chorus. *Sap* is built on a base of yellow shot with olive, bright green, orange, and brown. This most electric of our greens is right at home in an autumn palette, too, contrasting beautifully with red-orange and warm brown tones. Or use it for a clean, resonant note against deep blues, purples, and reds—*Sap* harmonizes with all our most saturated hues. Its versatility as an accent color makes it a great choice for accessories.



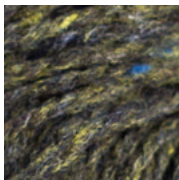
HAYLOFT: Harvest time amber gold. *Hayloft* is yellow caramelized with brown and garnished with orange and olive. It melds beautifully with all our autumn tones, but also makes a sophisticated contrast against our greys and deep blues. Use *Hayloft* to richly brighten any wardrobe, either in a statement piece like a dramatic blanket-front coat or as an accessory that can lift more somber ensembles.



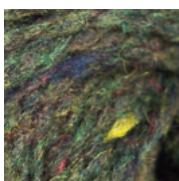
YELLOWSTONE: Warm moss agate, freshly collected from the river valley. *Yellowstone* blends many a warm shade of gold, rust, and umber in an organic harmony that exudes a beguilingly rustic appeal. *Yellowstone's* earthy undertones pair well with darker hues, such as *Pumpernickel*, and strike a pastoral note when given the chance to stand alone.



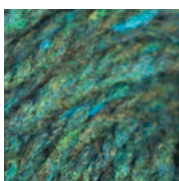
FOOTHILLS: Prairie haze. Fields after the harvest. *Foothills* is a mild sage green comprising white, grey, and yellow shaded with black, the palest member of a family that includes *Tent* and *Artifact*. Garments knit in this color make a good addition to wardrobes containing pale neutrals or olive greens. Consider *Foothills* for a surprising and effective accent color against cool reds and warm purples.



ARTIFACT: Late summer in a conifer forest. Our darkest and earthiest green is a blend of black, yellow, olive, and brown, touched with white and navy. This handsome and sophisticated shade is wonderful for menswear and could also serve as an unusual but effective dark neutral ground for colorwork accents in a feminine jumper. *Artifact* pairs naturally with *Foothills* for high contrast colorwork.



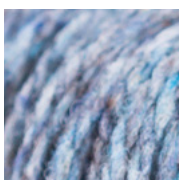
BIRDBOOK: The world beneath the Amazon canopy. A smoky, complex middle green containing both warm and cool elements, *Birdbook* is a jungly mix of olive, black, and green shot with parrot streaks of yellow, red, and navy. It shades naturally to *Meteorite* and, in the lighter direction, to *Tent* and *Fauna*. Across the colorwheel, it perfectly complements *Long Johns* and *Homemade Jam*.



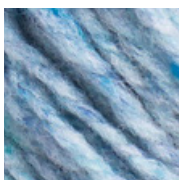
BUTTON JAR: Mallard's plumage. *Button Jar* is a playful but sophisticated teal of bright blue and green muddled with brown and black and then deepened with olive and yellow. It looks good on everyone and pairs exuberantly with all our boldest, brightest hues. Try *Button Jar* for a modern cabled pullover to layer over collared shirts, dresses, or jeans—the depth of its color recipe makes it surprisingly easy to pair with a full spectrum of other saturated colors. It also makes a welcome impact in more neutral wardrobes.



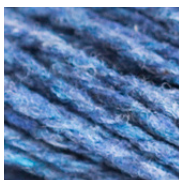
TARTAN: The green and blue of the banks and braes. This dashing peacock hue melds all our blues with teal and a shading of black. *Tartan* is the blue member of the family of cheerful brights in our palette. It hums in company with our purple gradient and sings aloud against our warm reds and oranges. Try it alone for children's wear and as a sophisticated accent with warm or cool neutrals.



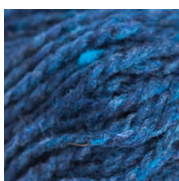
FADED QUILT: Ripples in the lake. *Faded Quilt* is a smoky blend of blues with white, brown, and grey. This soothing shade exudes down-home comfort, so choose it for a garment you know you'll wear to rags, for a child's special blanket, for a handsome throw in the family room. *Faded Quilt* is a natural partner for the full range of our browns and forms a gorgeous gradient with *Stormcloud* and *Truffle Hunt*.



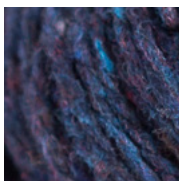
ICEBERG: Glacial horizons on a clear summer day. *Iceberg* is a pale icy blue that radiates a cool, cheerful brightness. Flecks of aquamarine, turquoise, and cerulean are under-lit with creamy white that makes Iceberg appear to glow from within. Consider illuminating neutrals, like *Fossil* or *Snowbound*, to pair with Iceberg for playful peerie bands.



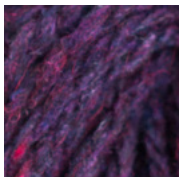
FLANNEL: Work-worn denim. This comfortable color is a mixture of blues distressed with white, black, and a touch of grey. Flecks of our brightest blue enliven this middle-value hue that perfectly bridges *Faded Quilt* to *Almanac*. *Flannel* is a natural choice for menswear used alone or in subtle stripes with any of our browns or greys.



ALMANAC: Bluewater sailing. This seafarer's blend of three blues is shaded with black and enlivened with a few frisking whitecaps. This stout and cheerful hue is great for menswear, children's wear, and women's garments—in short, it suits everyone. *Almanac* is a friendly color that readily harmonizes or pleasingly contrasts with BT hues across the spectrum.



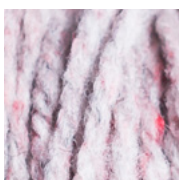
OLD WORLD: An Impressionist's starless night. *Old World* is a meld of black and navy grounded with a touch of grey and brown and shot through with bright blue and a frisson of red. Garments knit from *Old World* will appear navy from a distance, but are much livelier up close. This hue allies naturally with our reds and purples as well as our blues, and also makes a sparkling contrast across the spectrum to *Hayloft*.



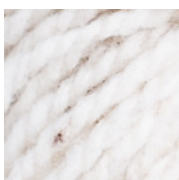
PLUME: Inky, regal purple. This symphony of black, purple, and navy with undertones of red is an elegant hue, perfect for those who love rich color but seek sophistication as well. *Plume* is a good choice for taking a classic garment somewhere unexpected or for lending flair to clean, modern shapes. In colorwork, we love it with *Wool Socks* and *Homemade Jam*.



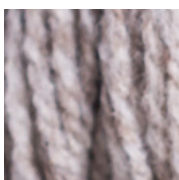
BLANKET FORT: Twilight on the porch swing. *Blanket Fort* is a nostalgic cool lavender with hints of navy, purple, and red. This sweetly feminine shade is ideal for delicate garments with a touch of lace. Wear it when you're catching fireflies in Mason jars or picnicking in the shade of a gracious old tree. *Blanket Fort* pairs well with our blues, purples, and cool reds; it's also fetching with our cool greens.



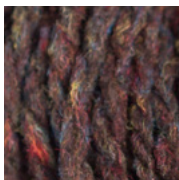
POSTCARD: The pearly first light of winter dawn. *Postcard* is a gentle newsprint grey lit with flickers of red. Try it in a gradient with *Blanket Fort* and *Homemade Jam* or let it stand alone to create faintly rosy garments that pair wonderfully with dark greens and with cool, pale greys and cream tones.



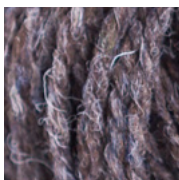
FOSSIL: Stags' velvety antlers. *Fossil* is white warmed with a whisper of brown. Our palest neutral, *Fossil* begins our brown gradient, shading gradually into *Woodsmoke*, *Barn Owl*, *Nest*, and *Pumpnickel*. *Fossil's* faint caramel glow is unparalleled for rendering ornate cable motifs or stitch patterns and creates timeless garments you can pair with anything in your closet.



WOODSMOKE: Weathered driftwood. A gentle blend of white and brown, darker than *Fossil* and paler than *Barn Owl*, *Woodsmoke* is perfect for garments that will coordinate effortlessly with any wardrobe. It partners easily with colors across the BT palette and is perhaps particularly handsome with our oranges.



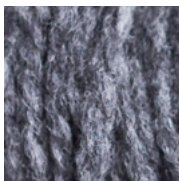
METEORITE: An unearthly metallic brown shaded with black and laced with primary blue, yellow, and red. This unusual color can work with greens—try it in a gradient with *Birdbook* and *Tent*—or with the red-oranges, *Embers* and *Wool Socks*. Garments knit from *Meteorite* will read from a distance as dark olive brown and pair well with creamy or camel neutrals and with dark jeans.



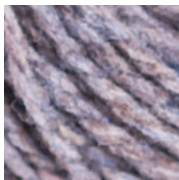
TRUFFLE HUNT: Sleek seals' fur reflecting the waves. *Truffle Hunt* is a milky brown shaded with black and navy. It forms a beautiful blue-brown gradient with *Stormcloud* and *Faded Quilt* as well as adding a note of interest to the brown gradient between *Nest* and *Pumpnickel*. *Truffle Hunt* is favorite choice for dark neutral garments with unusual depth; if you live in blue jeans, this shade is an especially good choice for a sweater.



CAST IRON: Moonlight on the water. *Cast Iron* is black grizzled with luminous white. This charcoal grey is the darkest member of a gradient with *Soot*, *Sweatshirt*, and *Snowbound*. Use it for menswear, for dressy cardigans, or anywhere you want a lively black that generously reflects light rather than swallowing it. It's easier on the eyes than pure black during the knitting process, too.



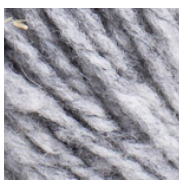
SOOT: Salt and pepper in equal measure. *Soot* is a strong cinder grey that bridges the gradient between *Sweatshirt* and *Cast Iron*. It has a similar value to our most saturated bright hues; try pairing it with *Hayloft* for striking colorwork. *Soot* renders understated staple garments or showier pieces with timeless elegance.



STORMCLOUD: The river at flood stage. *Stormcloud* is a dusky blue-brown blend of grey, brown, white, and a peppering of navy. Closely related to the darker *Truffle Hunt*, it also makes the perfect transition between our pale browns and our blue range—use it to shift seamlessly from *Barn Owl* to *Faded Quilt*. *Stormcloud* makes wonderful workaday garments to wear with jeans, or try it as an elegant cool neutral to set off bright colors.



SWEATSHIRT: Flakes of ash from last night's campfire. *Sweatshirt* is a calm middle grey, splitting the difference between *Soot* and *Snowbound*. Equally right for classic sports sweaters or showy modern shapes, *Sweatshirt* is a truly versatile shade. Light enough to make the most of intricate cables or stitch patterns, this is a color to reach for again and again.



PUMICE: Coastal cairns. Foggy shorelines. *Pumice* nestles nicely in the midst of our grey colorway family. Neighbored by *Sweatshirt* and *Snowbound*, *Pumice* completes a serene gradient with its tweedy mid-grey blend and occasional mote of black. Garments knit with *Pumice* find a natural home in wardrobes composed of cool neutral hues.



SNOWBOUND: Gathering clouds. This palest of our greys is a soothing cool neutral that will render garments at home in any wardrobe. It's a natural choice to show off elaborate cables or textural designs; it also works so well with the rest of the BT palette that it makes a perfect backdrop for bold colorwork.



NEWSPRINT: *Cast Iron* and *Fossil* twist and shout in high contrast. *Fossil*'s light heathering of brown gives a warm cast to this graphic marl. *Newsprint* adds instant impact to simple stockinette fabrics — try it on a dramatic canvas like Jared Flood's Corvid duster. The busy surface will obscure stitch motifs, but an uncomplicated cable at a large scale won't be lost.



NARWHAL: *Fossil* and *Sweatshirt* combine in a medium-value marl with warm and cool currents. This overcast shade is great for sweaters. Boldly textured patterns will be softened by the marl, but will still stand and deliver.



CARIBOU: *Barn Owl* and *Fossil* entwine in a warmly glowing marl. These toasted browns create a fabric with depth and friendly character. *Caribou* would enhance a casual pullover or a simple tunic, or consider it as the body color to set up an Icelandic-style yoke design.



CARAWAY: A marl of *Hayloft* and *Truffle Hunt*.



AMARANTH: A marl of *Cinnabar* and *Long Johns*.

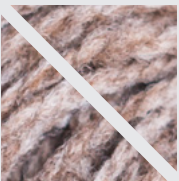
RETIRED COLORS



PUMPERNICKEL: Good earth. This mix of black and brown is richly dark and warm, like a strong cup of coffee. *Pumpernickel* is splendid on its own; it also forms a beautiful base for colorwork with our other browns and greys or grounds our bright hues. This mahogany brown looks good on everyone and with everything, so it's a natural choice to bring into your wardrobe for staples you'll reach for again and again.



NEST: Rich mink brown flecked with white. This hearty and flattering hue is a good choice for accessories that will frame the face and coordinate easily with outerwear. *Nest's* ability to pull disparate bright colors together and ground them also makes it wonderful for layering garments. Try it for the body of sweaters with vibrant colorwork yokes or hems.



BARN OWL: Milky cocoa. *Barn Owl* is a warm mid-brown that completes the gradient between *Woodsmoke* and *Nest*. To compare the values of *Barn Owl* and *Nest*, look at Grace Anna Farrow's Trestle pullover from Wool People 6, which combines the two shades in stripes. *Barn Owl* pairs well with our deep greens, blues, and purples and makes a good backdrop for colorwork.



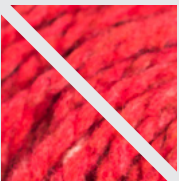
TALLOW: Moroccan sand dunes. This warm, light camel color gets a faint apricot blush from sparse flecks of rust. *Tallow* reads as a pleasing warm neutral with most of our stronger hues; we recommend trying it with *Long Johns*, *Wool Socks*, *Artifact*, and *Almanac* if you're knitting stripes. It's also a happy partner for *Camper*.



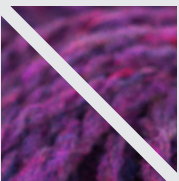
FAUNA: Maple leaves at the first turning. One of our most complex colors, *Fauna* is a stew of rust and olive lit with yellow, green, and red but simultaneously shaded with brown and black. *Fauna's* shifting bronze tones make it the perfect way to move from greens to yellows, oranges, or browns in colorwork.



TENT: Pickle green, just the shade of dilly beans and cucumbers brined for summer canning. This lively green is a blend of olive, lime, brown, and yellow with subtle undertones of navy and rust. *Tent* is the versatile middle value of a yellow-green family with *Foothills* and *Artifact*. Try it with *Birdbook* for a low-contrast, clear green scheme, or use *Fauna* to bridge between *Tent* and the orange-reds.



CINNABAR: Poppy red. This fiery vermilion is lit with orange, rust, a touch of calmer camel, and just a few wisps of black. *Cinnabar* makes an infectious partner for *Long Johns* or the earthier *Home-made Jam*; try it with *Thistle* and *Plume* for a color-drenched shawl or as an eye-catching accent with our brown gradient. It also begs to come out and play in Fair Isle-inspired colorwork, where a startling hue can bring the whole design alive.



THISTLE: Red-purple lilac blossoms. This sprightly purple is muddled with navy, brown, red, and white for warm and cool notes. *Thistle* is obviously kin to *Plume*, *Old World*, and *Blanket Fort*; it's also happy to pair with *Long Johns* and *Camper* or any of our brightest, clearest hues. Playful *Thistle* is perhaps rather intense for adult-size garments, but is perfect for accessories or in colorwork with a more subdued background tone.